

ANNOUNCEMENT

ART
GALLERY
NSW

MEDIA CONTACTS: Susanne Briggs 02 9225 1791 0412 268 320 susanne.briggs@ag.nsw.gov.au
Claire Martin 02 9225 1734 0414 437 588 claire.martin@ag.nsw.gov.au

2013 EXHIBITIONS ART GALLERY OF NEW SOUTH WALES

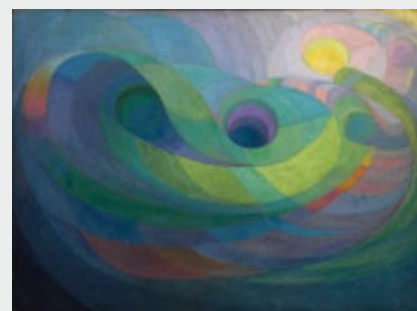
HIGHLIGHTS

Sydney moderns: art for a new world

6 JULY – 7 OCTOBER 2013

In the decades between the two world wars, progressive artists explored and promoted modernity through revolutions in colour and light. Their exuberant, cosmopolitan paintings, prints, sculptures, designs and applied arts represent one of the most distinctive and innovative periods in the history of Australian art. From the early 1910s, these artists created images of the modern metropolis and the dynamic patterns of modern living under light-filled skies or in richly coloured interiors.

Focusing on works created between 1915 and 1942 by artists largely based in Sydney, this exhibition explores the complex phenomenon of early Australian modernism, its relationship to internationalism and to Australian nationalism, and its path to abstraction. Artists include Antonio Dattilo-Rubbo, Tempe Manning, Roy de Maistre, Roland Wakelin, Grace Cossington Smith, Margaret Preston, Gladys Reynell, Anne Dangar, Thea Proctor, Grace Crowley, Ralph Balson, Rah Fizelle, Frank and Margel Hinder, Margo and Gerald Lewers, Dorrit Black, Harold Cazneaux, Olive Cotton, Max Dupain and Eric Wilson.



Roy de Maistre *Rhythmic composition in yellow green minor* 1919, oil on paperboard, 85.3 x 115.3 cm. © Caroline de Mestre Walker



Grace Cossington Smith *The bridge in curve* 1930, tempera on cardboard, 83.6 x 111.8 cm, National Gallery of Victoria, Melbourne. Presented by the National Gallery Society of Victoria, 1967 (1765-5) © Estate of Grace Cossington Smith

Renaissance to Goya: prints and drawings from Spain

31 AUGUST – 24 NOVEMBER 2013

This exhibition presents over 120 prints and drawings from the British Museum, which holds one of the finest collections of Spanish drawings in the world. The Art Gallery of NSW is the only Australian venue in an international tour which included the Prado in Madrid.

The exhibition brings together for the first time prints and drawings by Spanish and other European artists working in Spain from the mid 16th to the early 19th century, including many works which have never before been on display. Beginning with artists working in and around Madrid, the selection progresses chronologically and by region. Spain's 'Golden Age' (the 17th century) is represented by artists such as Diego Velázquez, Vicente Carducho and Alonso Cano in Madrid, Bartolomé Murillo and Francisco de Zubarán in Seville, and José de Ribera in Spanish Naples. Turning to the 18th century, there are key works by Francisco de Goya, his contemporaries and foreign artists such as the Italians Giambattista Tiepolo and his sons.

This exhibition is presented by the British Museum in collaboration with the Art Gallery of New South Wales.



Francisco de Zurbarán *Head of a monk* 1635–55, black chalk and grey wash with traces of pen and ink, 27.7 x 19.6 cm. © The Trustees of the British Museum

We used to talk about love Balnaves contemporary: photomedia

31 JANUARY – 21 APRIL 2013

What is love? This exhibition of works by 11 contemporary artists explores the emotions of love, the pleasures of the flesh, and the wistful nostalgia of recollection. From playfully dressed-up bodies replete with sexual suggestion to a disintegrating sculpture of a stargazing young man and to collages evoking the memories and innocence of childhood, *We used to talk about love* considers the varied terrain of love's language – joy, elation, longing, loss, melancholia and memory. For the first time since opening to the public in 1988, the now-named Belgiorno-Nettis galleries will be reconfigured to take the viewer on a spatial and emotional journey through love's language, from beginning to end. The exhibition features work by Polly Borland (USA/Aus), Eliza Hutchison (Vic), Paul Knight (UK/Aus), Angelica Mesiti (France/Aus), David Noonan (UK/Aus), David Rosetzky (Vic), Darren Sylvester (Vic), Tim Silver (NSW), Glenn Sloggett (Vic), Grant Stevens (QLD) and Justene Williams (NSW).



Polly Borland *Untitled XXXII from Smudge* 2010, chromogenic print, 76 x 65 cm. Image courtesy of the artist and Murray White room, © the artist

ARTEXPRESS

21 FEBRUARY – 14 APRIL 2013

The annual ARTEXPRESS exhibition is one of the most popular at the Art Gallery of NSW. Bringing together an outstanding selection of works submitted for the NSW Higher School Certificate Visual Arts examination, it provides insights into students' creativity and the issues and ideas that are important to them. This year marks the 30th ARTEXPRESS exhibition at the Gallery.



Jordan Munns *Long after I am gone* 2011 (detail), photomedia, Model Farms High School

Archibald, Wynne & Sulman

23 MARCH – 2 JUNE 2013

Eagerly anticipated by artists and audiences alike, this annual event never ceases to create lively debate amongst the arts community and wider public. Each year, the trustees of the Art Gallery of NSW judge the Archibald and Wynne prizes, and invite an artist to judge the Sulman Prize. One of Australia's oldest and most prestigious art prizes, the Archibald is awarded to the best portrait painting, preferentially of some man or woman distinguished in art, letters, science or politics. The Wynne is awarded to the best landscape painting of Australian scenery or figure sculpture, while the Sulman is given to the best subject painting, genre painting or mural project in oil, acrylic, watercolour or mixed media.

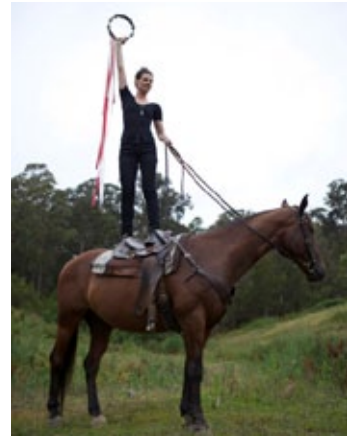


2011 Archibald winner Ben Quilty *Margaret Olley*

The space between us: Anne Landa Award for video and new media arts 2013

16 MAY – 28 JULY 2013

This biennial award was established in 2004 to honour Anne Landa, a former Art Gallery of NSW trustee and enthusiastic supporter of the arts. This year's exhibition (the fifth) explores performance as a force in contemporary art through the nexus of new technologies. Guest curated by Charlotte Day, associate curator at the Australian Centre for Contemporary Art in Melbourne, it presents new works by Lauren Brincat, Alicia Frankovich, Laresa Kosloff, Angelica Mesiti, Kate Mitchell, James Newitt and Christian Thompson that test physical and psychological boundaries through challenging feats, exercises in endurance, repetition and risk-taking.



Lauren Brincat *High Horse* 2012, Documentation of an action, Single-channel High Definition video 16:9, colour,

A Silk Road saga: Yu Hong's sarcophagus

22 AUGUST – 10 NOVEMBER 2013

In 1999 an extraordinary white marble sarcophagus, unlike any previous discovery, was excavated in Taiyuan, the capital of central China's Shanxi province. It belonged to Yu Hong and his wife, who had been interred in 592 and 598 CE respectively. This magnificent object in many ways exemplifies the transcultural nature of life along the famous Silk Road, with its multiethnic mix of traders, pilgrims, monks and soldiers. From afar, it looks like the model of a typical Chinese building, but closer inspection reveals detailed scenes of hunting, entertaining and religious worship, carved or painted on the interior and exterior. While the sarcophagus is the centrepiece, this exhibition also includes more than 20 objects from the tomb or from burials of the same period in the same province.



Groom and Camels, Northern Qi dynasty low relief 550–577, terracotta. Excavated from the tomb of Lou Rui, Wanggua village, Jinyuan, Taiyuan, Shanxi Province, 1981 Shanxi Provincial Museum

Aboriginal and Torres Strait Islander exhibitions

The Yiribana Gallery presents an annual collection based exhibition that showcases the diversity of Aboriginal and Torres Strait Islander art. The Yiribana Project Space allows more flexibility and will display three exhibitions annually that explore specific areas of the collection in greater detail.

Papunya Tula works on paper

13 DECEMBER 2012 – 24 MARCH 2013

Papunya Tula Artists revolutionised Australian art. The Art Gallery of NSW collection includes 11 works in pencil and watercolour made in 1971 before the men began the paintings on board and canvas for which they are renowned. Not displayed since 2000, these rare works will be exhibited alongside other works on paper from the company, including their inaugural print portfolio of 2009 – a landmark suite of 40 etchings by senior artists working alongside emerging artists, many of whom are children of the company's founding artists.



Naata Nungurrayi *Marrapinti* 2009
etching on Hahnemühle rag paper
Purchased with funds provided by the Aboriginal Collection

Yirrkala drawings

12 DECEMBER 2013 – 23 FEBRUARY 2014

RUDY KOMON GALLERY

In 1946–47 the senior ceremonial leaders of the Yirrkala region produced 365 vibrant crayon drawings on paper for the anthropologists Ronald and Catherine Berndt. Held by the Berndt Museum of Anthropology at the University of Western Australia, the works have never been shown in any great number. In an unexpected palette of brilliant red, blue, yellow, green and black, they depict in exquisite detail the complexities of Yolngu life and cultural inheritance. They include works by those who became leading artists, including Mawalan and Wandjuk Marika, Munggurrawuy Yunupingu, Narritjin Maymuru and Wongu Mununggurr. The descendants of these artists continue to produce artworks, and a selection of these will also be displayed.



Gumuk Gumana *River at Gangan* 1947, crayon on paper,
115 x 74 cm. Berndt Museum of Anthropology

AGNSW collection photography exhibitions

The photography gallery presents the 4500-strong permanent collection in exhibitions which change three times a year. The exhibitions can be the work of individual artists, groups of artists, pertinent themes or look at a specific period in photographic history whether Australian, international or both.

The fashion of Helmut Newton & Bettina Rheims

9 FEBRUARY – 19 MAY 2013

The Art Gallery of NSW has over 20 important photographs from an exemplary period in Helmut Newton's career, the years 1972-83. Newton had the ability to shock his audience by making explicit the relationship between body, clothes, environment and voyeurism. As German art historian Klaus Honnef commented in 1988, 'The totally artificial atmosphere of traditional fashion photography is missing in Newton's work, and we can begin to sense a latent imaginative realm of fantasies, dreams and nightmares'. The Gallery also holds Bettina Rheims' celebrated series *Modern Lovers* 1990, in which she subverts fashionable ideals of beauty by portraying the androgyny of young men and women.

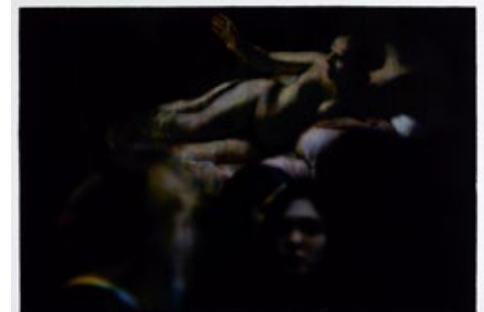


Bettina Rheims *Martine* 1989, gelatin silver photograph from the series *Modern Lovers* 1990. Gift of Edron Pty Ltd 1996

Bill Henson: cloud landscapes

30 MAY – 22 SEPTEMBER 2013

Bill Henson is one of Australia's leading contemporary artists. A master of the use of light and dark in the tradition of the great European masters, he has worked in the photographic medium for over three decades. This exhibition presents a selection of 12 photographs from the Gallery's collection. It reveals nuanced changes in colour and motif in the pictures over a 20-year period as he continues to work intensively on large-scale figure studies and 'landscapes'. This is the first time this group of photographs by Henson has been shown together at the Art Gallery of NSW.

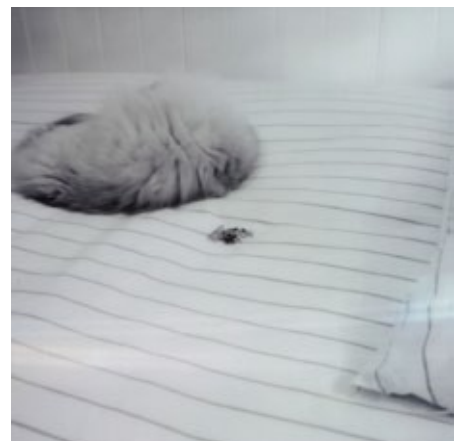


Bill Henson *Untitled* 2009-10, archival inkjet pigment print. Purchased with funds provided by the Art Gallery Society of NSW 2011

Joy before the object: from Man Ray to Catherine Rogers

2 OCTOBER 2013 – 2 FEBRUARY 2014

In the early days of the medium, it was expedient for photographers to arrange objects before the camera: when exposures were long, it was easier to deal with things that couldn't move. Over time, they developed increasingly sophisticated ways of depicting the object, as this exhibition reveals. Pictorialist, modernist, post-modernist and contemporary approaches to the photographic presentation of the inanimate object are explored through works by artists ranging from Man Ray, Olive Cotton, Max Dupain and John Eaton to Robyn Stacey, Sarah Ryan, Emma White and Catherine Rogers.



Sarah Ryan *Blossom* 2005, digital lenticular photograph. Viktoria Marinov Bequest Fund 2005

AGNSW Contemporary Projects

This ongoing series of exhibitions by living artists is a platform for the creation of new work. The projects offer audiences a focused opportunity to engage with current ideas and material developments in contemporary art.



Tony Albert

18 MAY – 7 JULY 2013

Tony Albert's practice interrogates the contemporary legacies of colonial oppression from an Indigenous Australian perspective. *Projecting the future* continues his process of integrating re-worked 'Aboriginalia' (kitsch objects that naively depict Australian Aboriginal people) with new painted and graphic elements to create complex, expansive wall installations. The final part in a major trilogy, the work considers cultural difference in relation to pride, optimism and solidarity.



Tony Albert, *A collected history* 2002–10, installation made up of hundreds of reworked objects, sculptures and paintings; original paintings and drawings; and three unique artworks by Vernon Ah Kee, Shane Cotton and Arthur Pambejan, Jr. 240 x 600 cm. Image courtesy the artist and Sullivan + Strumpf, Sydney.

Agatha Gothe-Snape & Sriwhana Spong

18 JULY – 1 SEPTEMBER 2013

Proceeding from a shared interest in embodiment and movement, this two-person exhibition extends upon the artists' recent investigations of the body in relation to context, the scoring of action, processes of translation across time and form, and the dynamic interplay between choreography and improvisation.



Sriwhana Spong, *Actions and Remains*, Auckland Art Gallery 2012. Steel, paint, concrete, hinuera stone, fabric, volleyball, choreography. Choreographed and performance by Yahna Fookes. Image courtesy the artist and Michael Lett, Auckland.

Alex Kerhsaw

12 SEPTEMBER – 10 NOVEMBER 2013

Alex Kershaw uses video as a tool for mediating intercultural exchange, through a process that incorporates performative, cinematic and 'ethnographic' approaches. Kershaw's new project *Fantasticology Tokyo* was developed in collaboration with four masters of Ikebana, the Japanese art of flower arrangement. The multi-channel video installation reworks vestiges of this ancient tradition through a series of orchestrated twists of context and materials that challenge and reinvent established roles and meanings.



Alex Kershaw *Muscles and pears* 2011
Production still from the work *Fantasticology Tokyo: faults, flesh, flowers*, HD video

Lucas Ihlein & Ian Milliss

28 NOVEMBER 2013 – 27 JANUARY 2014

This interdisciplinary project by Lucas Ihlein and Ian Milliss investigates the significance of Australian farmer and engineer PA Yeomans, whose early work in developing sustainable agriculture systems can also be seen as a model for radically reinterpreting the role of the artist as cultural activist. In 1975, Milliss curated an exhibition on this subject that was proposed to take place at the Gallery but cancelled due to its 'agricultural trade show aesthetic'. Fittingly, the project will be realised at the Gallery 38 years behind schedule.



Lucas Ihlein and Ian Milliss *Yeomans project – field trip to Taranaki Farm 2011*
Photograph: Stuart Harrison. Image courtesy the artists.

Exhibitions and dates may be subject to change